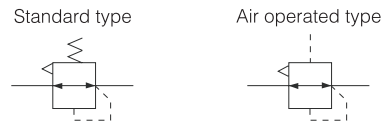


### Symbol



### Product feature

1. small size, light weight.
2. compared to the traditional precision pressure reducing valve IR200 output flow.
3. compared to the traditional precision relief valve, IR200 overflow flow.
4. accurate pressure setting.
5. The pitch of the adjusting screw is changed from traditional 0.75mm to 0.5mm.
6. Easy to install. It can be installed independently by bracket or directly installed with the modular filter assembly AF and AFM.
7. standard type also has panel installation.
8. The pilot exhaust port is separated from the main exhaust port.
9. can be used in clean rooms (special injection products).

### Ordering code

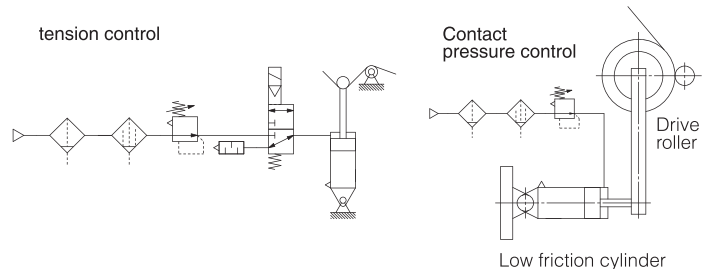
IR	2	0	0	0	02																																						
Model	Body size	Type of setting	Set pressure range		Port size																																						
IR Precision regulator	1 IR1000 series 2 IR2000 series 3 IR3000 series	0 Basic type(Knob) 1 Air operated type (only IR <sub>3</sub> 000)	<table border="1"> <thead> <tr> <th>IR1000\2000 series</th> <th>IR3000 series</th> </tr> </thead> <tbody> <tr> <td>0 0.05~0.2MPa</td> <td>0 0.01~0.2MPa</td> </tr> <tr> <td>1 0.01~0.4MPa</td> <td>1 0.01~0.4MPa</td> </tr> <tr> <td>2 0.01~0.8MPa</td> <td>2 0.01~0.8MPa</td> </tr> </tbody> </table>		IR1000\2000 series	IR3000 series	0 0.05~0.2MPa	0 0.01~0.2MPa	1 0.01~0.4MPa	1 0.01~0.4MPa	2 0.01~0.8MPa	2 0.01~0.8MPa	<table border="1"> <thead> <tr> <th>Symbol</th> <th>Size</th> <th colspan="3">Application</th> </tr> <tr> <td></td> <td></td> <th>IR1000</th> <th>IR2000</th> <th>IR3000</th> </tr> </thead> <tbody> <tr> <td>01</td> <td>1/8</td> <td>●</td> <td></td> <td></td> </tr> <tr> <td>02</td> <td>1/4</td> <td></td> <td>●</td> <td>●</td> </tr> <tr> <td>03</td> <td>3/8</td> <td></td> <td></td> <td>●</td> </tr> <tr> <td>04</td> <td>1/2</td> <td></td> <td></td> <td>●</td> </tr> </tbody> </table>	Symbol	Size	Application					IR1000	IR2000	IR3000	01	1/8	●			02	1/4		●	●	03	3/8			●	04	1/2			●
IR1000\2000 series	IR3000 series																																										
0 0.05~0.2MPa	0 0.01~0.2MPa																																										
1 0.01~0.4MPa	1 0.01~0.4MPa																																										
2 0.01~0.8MPa	2 0.01~0.8MPa																																										
Symbol	Size	Application																																									
		IR1000	IR2000	IR3000																																							
01	1/8	●																																									
02	1/4		●	●																																							
03	3/8			●																																							
04	1/2			●																																							
			Note: Air operated type only IR2120	Note: Air operated type only IR3120																																							

### Common specifications

sensitivity	Within 0.2% full degree
Repeatability accuracy	Within ±0.5% full degree
Gas consumption	IR10□□ Max.4.4ℓ/min(ANR)Under 1.0MPa pressure
	IR20□□ Max.4.4ℓ/min(ANR)Under 1.0MPa pressure
	IR2120 Max.11.5ℓ/min(ANR)Under 1.0MPa pressure
	IR30□□ Max.11.5ℓ/min(ANR)Under 1.0MPa pressure
	IR3120 Max.11.5ℓ/min(ANR)Under 1.0MPa pressure
Environment and fluid temperature	-5℃~60℃(Not frozen)
Maximum operating pressure	1.0MPa
Pressure gauge connecting caliber	Rc1/8

Note: gas filter (AF) and oil mist separator (AM and AFM) shall be used in the supply side.

### Application Example

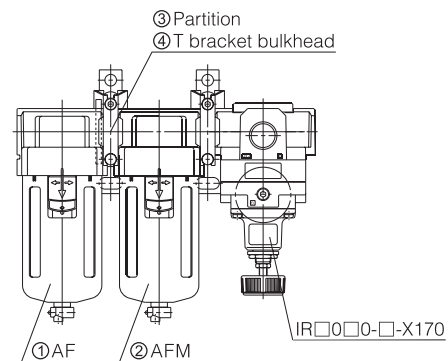


### Model Specifications

Model	Specifications			Accessories(optional)			
	Minimum use pressure (MPa)	Set the pressure range(MPa)	Pipe size	Pressure gauge type	Bracket type		
Standard type	Set pressure + 0.05	IR1000-01	0.005~0.2	1/8	G33-2-01	P36201023	
		IR1010-01	0.01~0.4		G33-4-01		
		IR1020-01	0.01~0.8	G33-10-01			
		IR2000-02	0.005~0.2	G43-2-01			
	Set pressure + 0.1	IR2010-02	0.01~0.4	1/4	G43-4-01	P36202028	
		IR2020-02	0.01~0.8		G43-10-01		
		IR3000-□	0.01~0.2	1/4, 3/8, 1/2	G43-2-01		P362030-20
		IR3010-□	0.01~0.4		G43-4-01		
Air control type	Set pressure + 0.05	IR2120-02	0.01~0.8	1/4	G43-10-01	P36202028	
		IR3120-□	0.01~0.8				

Note: □-Representative pipe size  
02=Rc1/4, 03=Rc3/8, 04=Rc1/2

### Installed on modular filter assembly

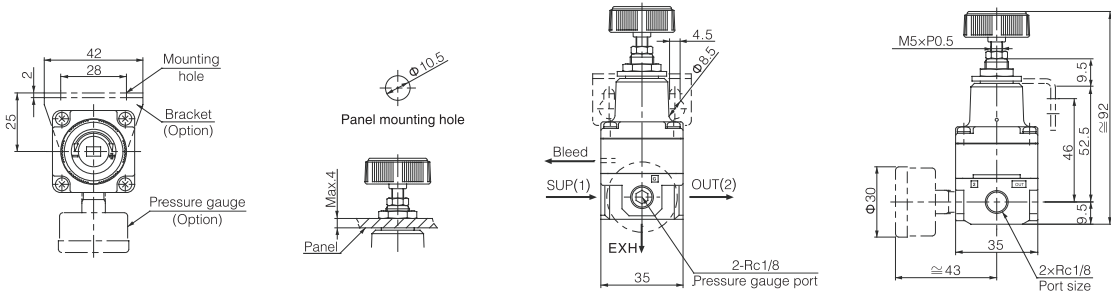


Suitable for accessory names	Suitable model		
	IR10□□0-01-X170	IR20□□0-02-X170	IR30□□0-□□-X170
① Air filter	AF20-A	AF30-A	AF40-A
② Oil mist separator	AFM20-A	AFM30-A	AFM40-A
③ bulkhead	Y200-A	Y300-A	Y400-A
④ T bracket bulkhead	Y200T-A	Y300T-A	Y400T-A

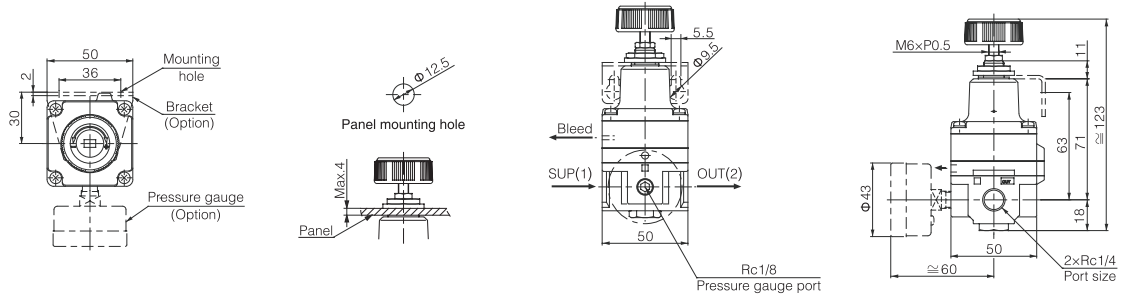
Note) modular combination of filters with non-standard models(IR□□□□-□□-X170)

## Dimensions

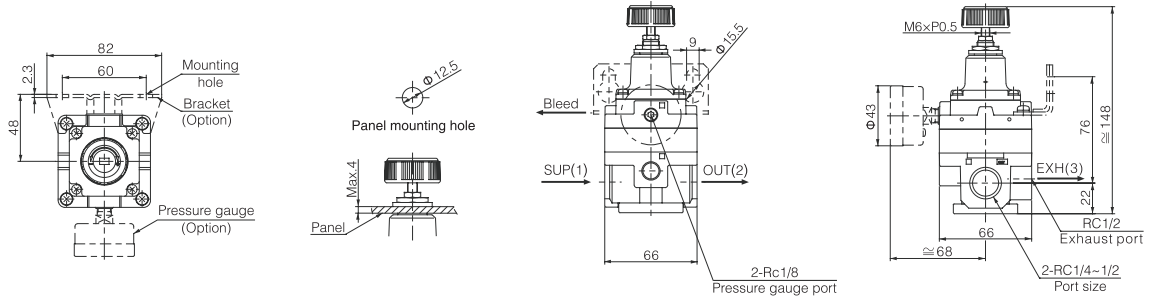
### IR10□0-01



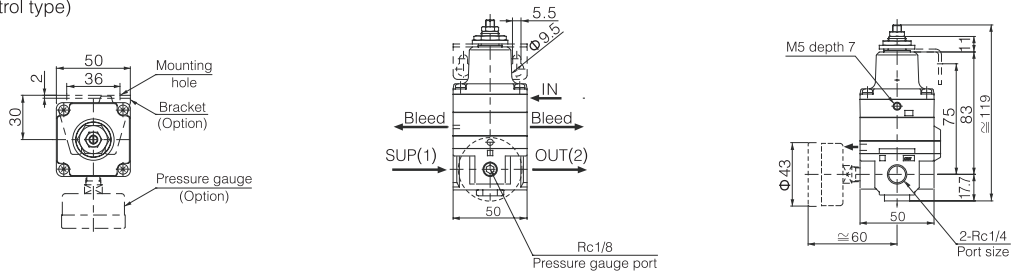
### IR20□0-02



### IR30□0-0□



### IR2120-02□ (Air control type)



### IR3120-0□□ (Air control type)

