



Specifications

Model Specifications	Normal Closed	P015NC	P020NC	P025NC	P032NC	P040NC	P050NC
	Normal Open	P015NO	P020NO	P025NO	P032NO	P040NO	P050NO
Body/sctuator material	S.S304 316 /PA, SS, AL						
Operating method	Plunger pilot						
Ambient and fluid	Air, Water, Oil(50CTS Bellow)						
Port size	G1/2"	G3/4"	G1"	G1 1/4"	G1 1/2"	G2"	
Nominal diameter (mm)	13	18	24	31	35	45	
Kv (m ³ /h)	4.2	9	19	33	42	59	
Seat seal	PTFE/FPM/NBR						
Stem seal	PTFE/FPM						
Piston seal	FPM/NBR						
Temperature of medium	-10~120!						
Installing	Above/below valve seat						

Product feature

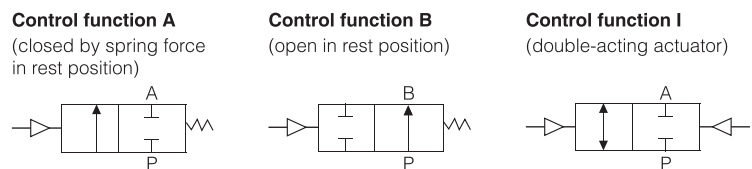
2/2-way Angle-seat valve
Pneumatically operated, for medium up to +120°C,
threaded port connection DN 15-50

1. High flow rate;
2. Long life cycle;
3. Deliverable with flow direction below or above seat.

Ordering code

EPV100	P	015
Model		Nominal diameter
EPV100 100 seires angle seat valve		15 G1/2"
		20 G3/4"
		25 G1"
		32 G1 1/4"
		40 G1 1/2"
		50 G2"
Actuator material code		
P PA Actuator		
S S.S. Actuator		
A Aluminum actuator		

Symbol



NC	S × 63mm
Control function	Acting type
NO Normally open	S Single acting
NC Normally closed (standard)	D Double acting
Body material	
Blank S.S 304 (standard)	

Actuator size

Port size	Standard actuator size (mm)		
	PA	S.S.	AL
DN15	40, 50	40, 50	40, 50
DN20	40, 50	40, 50	40, 50
DN25	50, 63, 80	50, 63, 90	50, 63, 80
DN32	63, 80	63, 90	63, 80
DN40	63, 80	63, 90	63, 80
DN50	63, 80	63, 90	63, 80

EPV100 Series plunger pilot angle seat valve is propelled by a piston actuator, either single acting or double acting.

Actuators are made of three different materials, applicable to different working temperature:

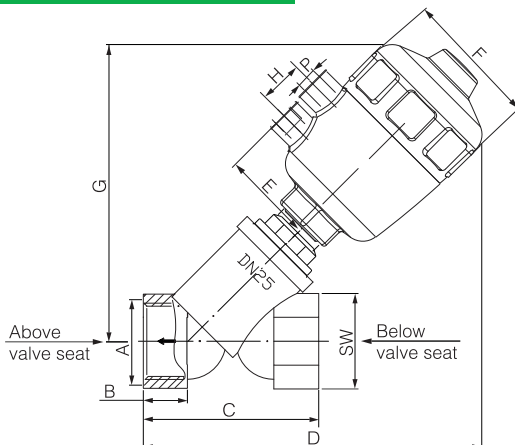
The valve is suitable for neutral gases or liquids, detergents and solvents;

2/2 way stainless steel valve with big flow capacity;

Widely used in industries such as food, textile, medicine, industrial washing equipment, chemical industry. etc.

Dimensions

Female threaded ends-EPV100P



Port size	DN (mm)	Actuator	A	B	C	D	E	F	G	H	P	SW
G1/2"	DN15	40	G1/2"	14	66	116	30	53	98	20	G1/8	28
		50	G1/2"	14	66	136	44	64	110	24	G1/4	28
G3/4"	DN20	50	G3/4"	16	68	141	44	64	115	24	G1/4	32
		50	G1"	20	80	155	44	64	125	24	G1/4	38
G1"	DN25	63	G1"	20	80	171	54	79.5	145	24	G1/4	38
		63	G1 1/4"	19	93	182	54	79.5	150	24	G1/4	47
G1 1/4"	DN32	63	G1 1/4"	21	104	194	54	79.5	155	24	G1/4	56
		63	G2"	25	110	207	54	79.5	165	24	G1/4	67
G1 1/2"	DN40	63	G2"	25	110	207	54	79.5	165	24	G1/4	67
		80	G2"	25	110	220	62	101	179	24	G1/4	67