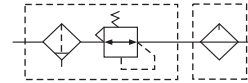




Symbol



Ordering code

AC	2010	02	D	
Model	Port size		Drain method	
AC A Series FR.L unit	M5 M5	Blank	Manual drain	
Series code	02 1/4"	A	Semi-auto drain	
1010 1000 Series	03 3/8"	D	Automatic drain	
2010 2000 Series	04 1/2"			
3010 3000 Series	06 3/4"			
4010 4000 Series	10 1"			
5010 5000 Series				

Specification

Model	Manual drain	AC1010-M5	AC2010-02	AC3010-02	AC3010-03	AC4010-03	AC4010-04	AC4010-06	AC5010-06	AC5010-10
	Automatic drain	AC1010-M5D	AC2010-02D	AC3010-02D	AC3010-03D	AC4010-03D	AC4010-04D	AC4010-06D	AC5010-06D	AC5010-10D
Port size		M5×8	1/4	1/4	3/8	3/8	1/2	3/4	3/4	1
Pressure gauge size		1/16	1/8	1/8	1/8	1/8	1/4	1/4	1/4	1/4
Rated flow(L/min)		90	500	1700	1700	3000	3000	3000	4000	4000
Proof pressure		1.5MPa{15.3kgf/cm ² }								
Max. pressure		1.0MPa{10.2kgf/cm ² }								
Temperature range		5~60℃								
Filtering grade		5μm								
Recommended oil		Turbine No. 1 oil ISO VG32								
Cup material		Polycarbonate								
Cup protective cover		AC1010~2010(Without) AC3010~5010(With)								
Pressure range		AC1010: 0.05-0.7MPa(0.51~7.1kgf/cm ²); AC2010~5010: 0.05~0.85MPa(0.51~8.7kgf/cm ²)								
Valve type		With overflow								
Assembly	Filter regulator	AW1000	AW2000	AF3000	AF3000	AF4000	AF4000	AF4000	AF5000	AF5000
	Lubricator	AL1000	AL2000	AL3000	AL3000	AL4000	AL4000	AL4000	AL5000	AL5000
Weight(kg)		0.22	0.66	0.98	0.98	1.93	1.93	1.99	3.2	3.2

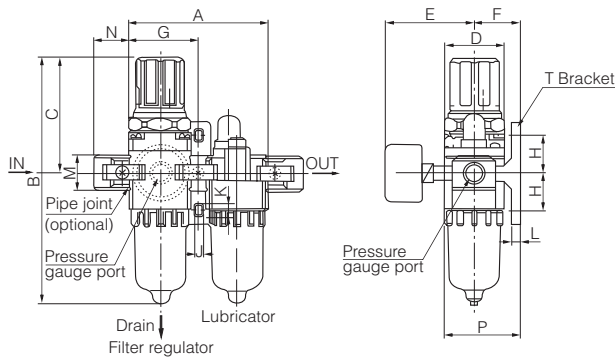
Note: 1. there are 2, 10, 20, 40, 70, 100μm to choose from.

2. Standard automatic drainage for normally open(N.O.), AC3010~5010 also has normally closed(N.C.)to choose from, and the lowest use pressure: normally open -0.1MPa(1kgf/cm²), normally closed -0.15MPa(1.5kgf/cm²).

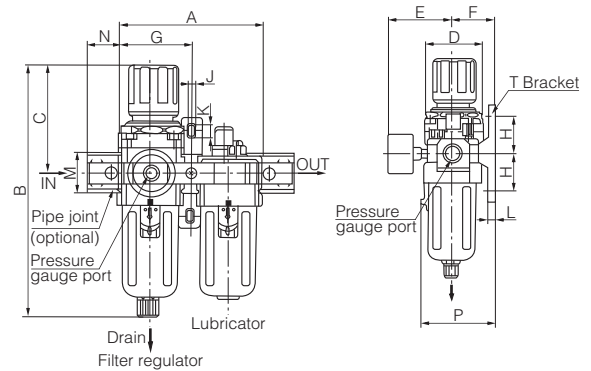
3. Supply pressure is 0.7MPa(7.1kgf/cm²)case.

Dimensions

AC1010-2010



AC3010-5010



Model	Port size	A	B	C	D	E	F	G	H	J	K	L	M	N	P	B(Automatic drain)
AC1010	M5×0.8	58	109.5	50.5	25	26	25	29	20	4.5	7.5	5	17.5	16	38.5	130
AC2010	1/4	90	164.5	78	40	56.8	30	45	24	5.5	8.5	5	22	23	50	187.5
AC3010	1/4-3/8	117	211	92.5	53	60.8	41	58.5	35	7	11	7	34.2	26	70.5	248.5
AC4010	3/8-1/2	154	262.5	112	70	70.5	50	77	40	9	13	7	42.2	33	88	300
AC4010-06	3/4	164	267	114	70	70.5	50	82	40	9	13	7	46.2	36	88	304
AC5010	3/4-1	195	338	116	90	75.5	69.8	97.5	50	12	16	10.5	55.2	40	115	-