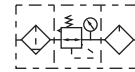


Symbol



Product feature

1. The structure is delicate and compact, which is convenient for installation and application.
2. The pressed-in self-locking mechanism can prevent the abnormal movement of the set pressure caused by external interfere.
3. The pressure loss is low and the efficiency of water separating is high.
4. The quantity of oil dripping can be directly observed through rtdansparent check-dome.
5. In addition to standard type, lower pressure type is optional(The highest adjustable pressure is 0.4MPa).

Ordering code

AC	2000	M	1	W
Model		Type code	Scale	Filtering grade
AC A Series F.R.L unit		Blank Standard(0.9MPa)	1 Mpa	Blank 40µm
BC B Series F.R.L unit		L Lower pressure(0.4MPa)	2 psi	W 5µm
Port size		Pressure gauge	3 bar	Thread type
Series Port size		Blank Pressure gauge	4 Double scale(psi、kgf/cm ²)	Thread type Scale
AC 1500: 1/8"		N No pressure gauge		Blank PT MPa or kgf/cm ² & psi
AC 2000: 1/4"		Drain type		G G bar
AC 2000: 1/4"		Series Drain type		T NPT psi
BC 3000: 3/8"		AC Blank: Semi-auto drain		
BC 4000: 1/2"		AC M: Manual drain		
		BC Blank: Semi-auto drain		
		BC M: Manual drain		
		A: Automatic drain		

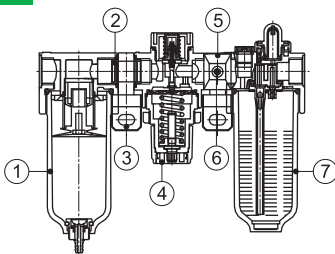
Specification

Model	AC1500	AC2000	BC2000	BC3000	BC4000	
Fluid	Air					
Port size	PT1/8	PT1/4	PT1/4	PT3/8	PT1/2	
Filtering grade	40µm or 5µm					
Pressure range	Semi-auto and automatic drain:0.15~0.9MPa(20~130psi); Manual drain: 0.05~0.9MPa(7~130psi)					
Max. pressure	1.0MPa(145psi)					
Proof pressure	1.5MPa(215psi)					
Temperature range	-5~70°C					
Capacity of drain bowl	10CC			60CC		
Capacity of oil bowl	25CC			90CC		
Recommended	ISO VG 32 or equivalent					
Weight	700g			900g		
Constitute	Filter	AF1500	AF2000	BF2000	BF3000	BF4000
	Regulator	AR1500	AR2000	BR2000	BR3000	BR4000
	Lubricator	AL1500	AL2000	BL2000	BL3000	BL4000

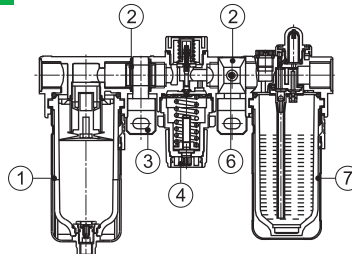
① PT thread, G thread and NPT thread are available.

Inner structure

AC

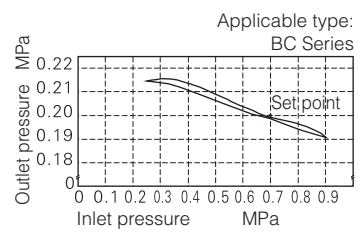
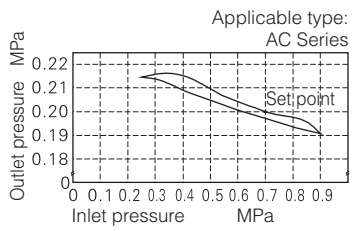


BC

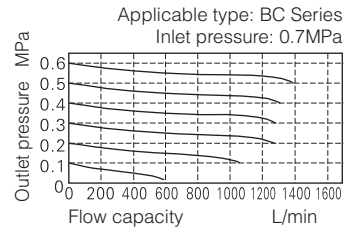
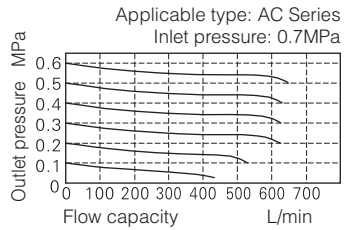


No.	Item
1	AF, BF series filter
2	A, B Series gasket
3	A, B Series bracket
4	AR, BR Series regulator
5	A, B Series fix kit
6	Screw
7	AL, BL Series lubricator

Pressure chart



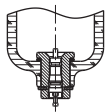
Flow chart



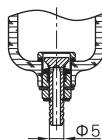
Selection of drain mode

AC

Manual drain



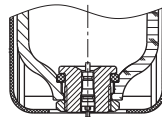
Semi-auto drain



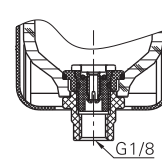
This semi-auto drain can also achieve the function of manual drain
PU tube with an inner diameter of $\Phi 4$ mm is recommended

BC

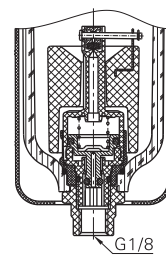
Manual drain



Semi-auto drain

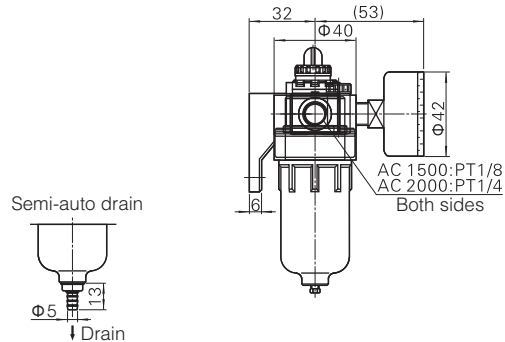
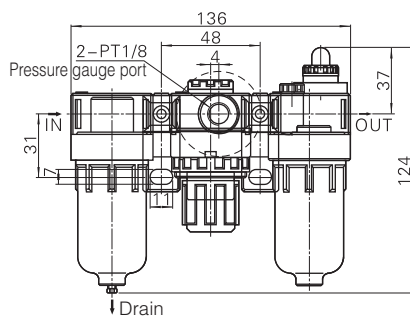


Automatic drain



Dimensions

AC



BC

