

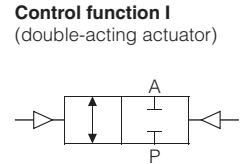
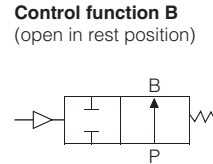
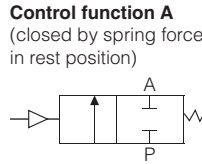


### Product feature

2/2-way Angle-Seat Valve  
Pneumatically Operated,  
for medium up to +180°C,  
Polished Actuator  
port connection DN 15-65

1. High flow rate;
2. Long life cycle;
3. NC and NO universal actuators with modular universal accessory program up to control heads;
4. Deliverable with flow direction below or above seat
5. Simple conversion of the circuit function.

### Symbol



### Ordering code

<b>PV700</b>		<b>S</b>	<b>015</b>	
<b>Model</b>			<b>Nominal diameter</b>	
PV700	700 Seires angle seat valve		15	G 1/2" 40 G 1 1/2"
			20	G 3/4" 50 G 2"
			25	G 1" 65 G 2 1/2"
			32	G 1 1/4"
<b>Actuator material code</b>				
	S   S.S. Actuator			

<b>NC</b>	
<b>Control function</b>	
NO	Normally open
NC	Normally closed (standard)

<b>Body material</b>	
Blank	S.S 304 (standard)
4	S.S 316
5	S.S 316L

<b>S × 63mm</b>	
<b>Acting type</b>	
S	Single acting
D	Double acting

### Actuator size

Port size	Standard actuator size (mm)
	S.S.
DN10	40,50
DN15	40,50
DN20	50,63,80
DN25	50,63,90
DN32	63,80
DN40	63,80
DN50	63,80
DN65	90,100

PV700 Series plunger pilot angle seat valve is propelled by a piston actuator, either single acting or double acting.

The actuator is one punch formed with stainless steel plate, surface polished, thus more appealing, applicable to different working temperature:

2/2 Way stainless steel valve with big flow capacity V type seals ensure reliable and effective sealing.

Maintenance free, compatible with various accessories, Direction indicating, stroke limiting or manual switching can be achieved conveniently.

## PV800 Series Angle Seat Valve(Piston Valve/Y-type Compact Valve)

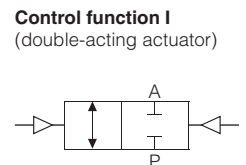
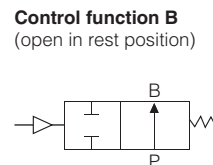
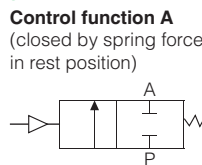


### Product feature

2/2-way Angle-Seat Valve  
Pneumatically Operated, for  
medium up to +150°C, threaded  
port connection DN 15-50

1. Classic design, Long life cycle;
2. NC and NO is optional;
3. Structure in coaxial stop, leakage proof and high flow rate;
4. Saving energy.

### Symbol



### Ordering code

<b>PV800</b>		<b>A</b>	<b>015</b>	
<b>Model</b>			<b>Nominal diameter</b>	
PV800	800 Seires angle seat valve		15	G 1/2" 32 G 1 1/4"
			20	G 3/4" 40 G 1 1/2"
			25	G 1" 50 G 2"
<b>Actuator &amp; stem material code</b>				
	S   S.S.			
	A   Aluminium			

<b>NC</b>	
<b>Control function</b>	
NO	Normally open
NC	Normally closed(standard)
NA	Liberty stabe

<b>S</b>	
<b>Acting type</b>	
S	Single acting
D	Double acting(standard)

<b>H</b>	
<b>Sealing Require</b>	
H	High temprature
Blank	Normal(standard)

### Construction

Seal material: PTFE(NBR, FKM and EPDM on request)  
Liquid and gaseous media that do not attack the housing  
and seal materials

### Media

Control medium: Air

### Temperature range

Medium temperature: -10 to 80°C with NBR seal; -10 to 150°C (PTFE, FKM)  
Ambient temperature: -10 to 60°C  
Standard Version: Aluminium actuator, S.S actuator on require

### Applications

Food, packaging, petrochemical, metallurgican, spraying, vehicles, printing  
and dyeing machinery etc.